



SYNCHRONOUS BELT 5M

Width in Millimeters (mm)	10	12	16	25	32	50	75	100	150
---------------------------	----	----	----	----	----	----	----	-----	-----

Toothed Belt 5M

Pitch:	5 mm
Max. Width:	150 mm
Shore Hardness:	92° A
Material:	TPU
Cord:	Steel / Kevlar

Standard Tolerances

Length:	±0,5 mm/m
Width:	±0,5 mm
Height:	±0,25 mm

Min. requirements for pulleys and roller:

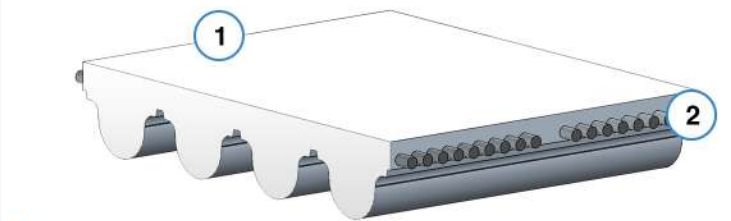
No counterflexion

Min. Number of teeth:	16
Min. Diameter:	24,32 mm
Diameter tension roller:	50 mm

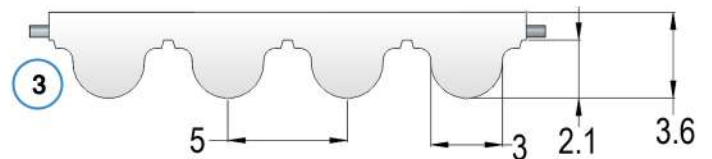
With counterflexion

Min. Number of teeth:	20
Min. Diameter:	30,69 mm
Diameter tension roller:	60 mm

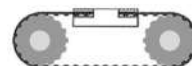
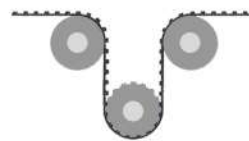
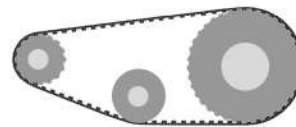
Characteristics:



- 1.- Polyurethane
- 2.- Steel cords
- 3.- Tooth



Use:



Available with Green Fabrics (PAZ, PAZ/PAR)